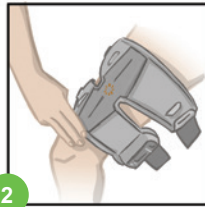
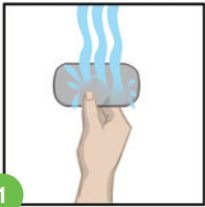


Thigh Plus/Stand-Alone User's Reference Card

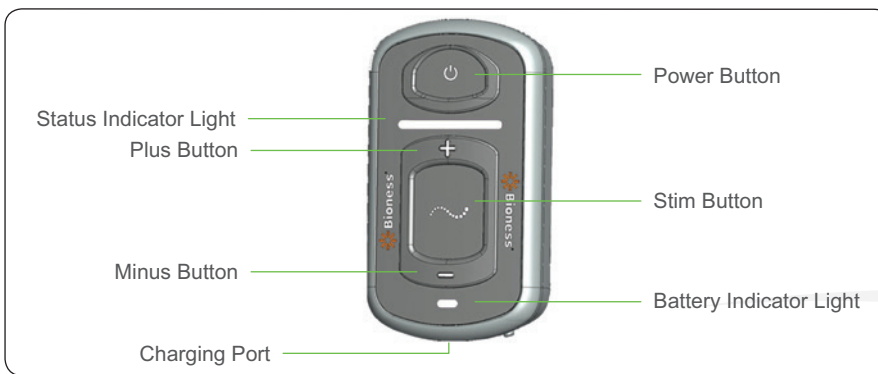








Putting On the L300 Go Thigh FS Cuff

- 1 Wet and attach the Thigh Cloth Electrodes to the L300 Go Thigh FS Cuff.
- 2 For placement on the quadriceps while seated, place the L300 Go Thigh FS Cuff on your thigh, positioning the locator three finger widths from your knee.
- 3 Make sure to place the L300 Go Thigh FS Cuff in the fitting position determined by your clinician. See Figure 3.
- 4 For placement on hamstrings, while seated or standing, place the L300 Go Thigh FS Cuff at least four finger widths above back of knee, right under the gluteal fold. See Figure 4.



Operating the L300 Go System



- 1 Press the  on/off button to turn on the EPG.
- 2 Select either gait or training mode:
 - To select gait mode, press the  mode button *briefly*.
 - To select training mode, press and *hold* the  mode button for 3 seconds. The EPG will acknowledge the new mode with audio and tactile feedback. To exit training mode, press and hold the  mode button for 3 seconds.
- 3 If necessary, adjust the stimulation intensity level by pressing the  plus or  minus button.

Rx Only (US only)

L300 Go®, Bioness, the Bioness Logo® and LiveOn® are trademarks of Bioness Inc. | www.bioness.com



Charging the Batteries

Connect the system charger set to the EPG, then plug into a wall socket.



(flashing)	EPG Status Indicator Bar Flashes Red along with Battery Indicator Light Flashing Yellow	EPG Low Battery
(flashing)	Flashes Yellow	Low Battery
(flashing)	Flashes Green	Charging
(flashing)	Solid Green	Fully Charged

EPG Displays



(flashing)	Flashes Green	System is On
(flashing)	Flashes Green	Stimulation is Off
(flashing)	Flashes Yellow	Stimulation is On
(flashing)	Flashes Red with Audible Alarm	Active Error
(flashing)	Solid Red	EPG Malfunction

Control Unit Displays*



	Solid	System is On
	Stim Wave Visible	System is in Gait/Training, Stimulation is enabled but Off
	Stim Wave Flashes	System is in Gait/Training, Stimulation is enabled and On
	Displays 0–9	Intensity Level
	Displays Gait Icon	Gait Mode is Enabled
	Displays Training Icon	Training Mode is Enabled
	Displays Audio Icon	Audio is On

*Optional Component

System Error Displays

(flashing)	Faulty Electrode Contact. Ensure electrodes are snapped in, EPG fully in cradle. Clear error alert by pressing or on EPG.	
(flashing)	Low Battery Indicator on EPG. Charge system.	EPG Malfunction. Press and hold for 30 seconds then power on or call Technical Support.



Bioness Inc
25103 Rye Canyon Loop
Valencia, CA 91355
Telephone: 800.211.9136
Email: info@bioness.com
Website: www.bioness.com

EC REP

Bioness Europe B.V.
Stationsweg 41
3331 LR Zwijndrecht, The Netherlands
Telephone: +31.78.625.6088
Email: international@nl.bioness.com
Website: www.bioness.com



CE
0086